



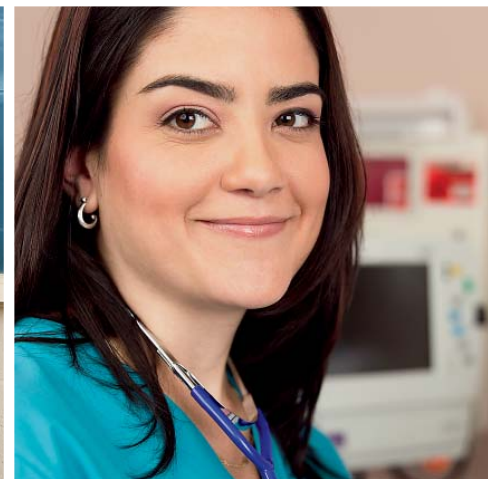
**INVESTING OUR TIME, TALENTS  
AND TREASURES IN ARIZONA**  
A FUND OF THE ARIZONA COMMUNITY FOUNDATION

A giving circle allows individual donors to pool their resources to make a bigger impact on charitable causes of shared interest.

The Latina Giving Circle exists to empower the Latino community through collective and strategic philanthropic efforts.

The LGC mission is to use our time, talents and treasures to support Arizona's communities. Our goal is to build a multimillion-dollar endowed fund to support Arizona communities, with special emphasis on Latino populations, indefinitely.

The Latina Giving Circle is the first of its kind in Arizona, and possibly the country.



# INFLUENCE. AFFLUENCE. EMPOWERMENT.

Historically, Latinos have contributed to the community through financial and in-kind support of our neighborhoods, family, places of worship and schools. However, Latinos are not adequately represented in organized philanthropic institutions and donor advised funds when compared to the increasing Latino population in Arizona.

Nationwide, by the year 2050, the Latino population will increase by 200 percent. While our population and needs are growing, less than 2 percent of all funding from U.S. foundations goes to Latino organizations.

Nonprofit organizations serving the Latino community are in need of support, and Latinos are increasingly positioned to participate as substantial contributors to the nation's social investment capital.



# THIS IS OUR OPPORTUNITY TO EMPOWER OURSELVES AND CREATE A LEGACY.

In 2009, two program officers began working with the Arizona Community Foundation to develop programs to invite Latinos to participate and learn about organized philanthropy and donor advised funds.

After much dialogue and support of local Latinas, the Latina Giving Circle was born. The LGC is managed by its members, with oversight and financial management provided by the Arizona Community Foundation.

The values of the Latina Giving Circle include: inclusivity, consensus, respect, professionalism, responsiveness and strategy.

Pictured, left to right, are five of the original 25 founding members of the Latina Giving Circle: Paulina Vazquez Morris, Karla Robles, Lydia Aranda, Belen Gonzalez, Hortencia Garcia







## MEMBERSHIP IS OPEN TO ALL.

Members of the Latina Giving Circle are professional women who are committed to creating positive change in four areas: Education, Health, Immigration and Leadership. It is an effort by Latinos, for Latinos, with support from those who believe in the potential of Latinos, regardless of race or background. Each member contributes \$1,000 annually and participates on one or more committees. Each committee is responsible for developing a grantmaking strategy for its issue area.



## MEMBERSHIP OPPORTUNITIES

1.) Latina Giving Circle members have the opportunity to participate on one or more of the Program Area Committees:

- Health Committee
- Immigration Committee
- Education Committee
- Leadership Committee

The committees develop grantmaking strategies for their program areas. Funding recommendations from each committee are presented to the Governance Council for final decision and ratified by the Arizona Community Foundation's Board of Directors.


2.) The Latina Giving Circle Governance Council is Latina-led and meets quarterly. Members of the Governance Council participate in at least three meetings each year and one or more of the Program Area Committee meetings.

If you wish to support the Latina Giving Circle and choose not to participate as a member of the Latina Giving Circle or the Governance Council, your charitable gift is also welcome.



## COMMITTEE PARTICIPATION

Participation on a Committee is open to all men and women who are interested in the priorities of the Latina Giving Circle, including Latinos and non-Latinos, and fulfill the \$1,000 annual contribution.



You are invited to join this movement,  
to get involved in creating a stronger Arizona  
and become an active philanthropist.

Your \$1,000 annual gift can be made in  
installments over three, six or 12 months.

**Send your tax-deductible gift to:**  
Arizona Community Foundation/  
Latina Giving Circle  
2201 E. Camelback Road, Suite 405B  
Phoenix, AZ 85016

To make a credit card gift, to give stocks or other  
assets, or to make a pledge to be paid in installments  
over the next year, please call (602) 381-1400  
for personal assistance.

To find out more or to make a commitment to the  
Latina Giving Circle, go to [www.latinagivingcircle.org](http://www.latinagivingcircle.org).



“ THE POWER OF PHILANTHROPY  
IS THE POWER TO TAKE RISK—  
TO DO WHAT OTHERS WANT TO  
DO, BUT CAN'T. TAKE ADVANTAGE  
OF IT IF YOU WANT TO DO  
SOMETHING YOU CARE ABOUT! ”

AIDA RODRIGUEZ, PHILANTHROPIST



ARIZONA COMMUNITY FOUNDATION / LATINA GIVING CIRCLE

2201 E. Camelback Road, Suite 405B • Phoenix, AZ 85016  
(602) 381-1400 • [www.latinagivingcircle.org](http://www.latinagivingcircle.org)